

[View this email in your browser](#)

Cappings

Pierce County Beekeepers Association

December 2016 - Volume 22 - Issue 12

Presidents Report
Franclyn Heinecke

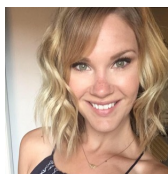
Congratulations to the newly elected officers for 2017!

President — Larry Golden

Vice President — John Thomas

Secretary — Briana Witt

Treasurer — Sherri Thomas



Larry will be selecting chairs for various committees — education, programs, membership, apiary. Those chair people will need volunteer helpers.

Please contact Larry if you are able to help in any of these areas.

Review of 2015-2016

It has been a distinct honor to serve as your president for the past two years.

I went into the office concerned about forage for bees.

Here's what we were able to accomplish, and what is still in the works:

Passed HB 2478 that requires the noxious weed board to establish some pilot project that replace important forage plants when “weeds” are removed. We have been working on that legislation for three years, and are grateful to our local representatives who supported it, especially Melanie Stambaugh and David Sawyer.

with organizations that we have worked with in the past two years.

Establishing a pollinator preserve in Parkland — To put this legislation into practice, we are working with Pierce County Parks & Recreation to reclaim 4.5 acres at the Parkland Prairie Nature Preserve and turn it into a pollinator habitat. The land has 4 distinct eco systems, and we will be keeping a large tract of blackberry — considered an invasive plant but crucially important for its copious supply of nutritionally packed pollen and nectar. With the help of Rep. David Sawyer, we were able to get \$30,000 from the state supplemental budget for this project, and raised another \$14,000 in grants. \$10,000 of these funds came from the WA State Dept of Agriculture, apiary registration funds. Typically, funds from our apiary registrations go to honey bee research at universities. We greatly appreciate the support of the Apiary Advisory Committee in granting these funds for the Parkland project. We also received a \$2,000 matching grant from the Washington State Beekeepers Association for educational signage, with PCBA matching that amount.

Working with WSU Puyallup for two pollinator gardens on campus — We have already started to plant a 3,000 square foot garden near our apiary and have designs for a 6,000 square foot garden at the front entrance to the campus. We secured about \$1,200 worth of plants for the apiary garden, plus generous donations from McLendon Hardware for a new fence around our apiary. Phillip Golden designed and built that fence as his Eagle Scout project. We continue to seek donations and grants to fully fund these garden projects.

Other PCBA highlights include:

Speakers and workshops — We were able to bring in several national-level speakers in the past two years including Sue Cobey on queen rearing, Dewey Caron on mite control and fall management, Peter Loring Borst on managing bees. We also welcomed Dave Hunter on mason bees, Vernon Craig on pest management, plus hearing from our more experienced beekeepers and meeting together in community clusters.

Three study grant students funded in 2016 — Isaiah Dow, Dylan Gylling and Carson Newlun worked hard to build their boxes and learn from their mentors about beekeeping. Thank you to members Jim Martinson, Jim Erickson, and Craig Sailor for their mentoring. Philip Golden and Keanu Pemorio were study grant recipients in 2015.

Our great volunteers — as an all-volunteer organization, we are ever so grateful for the time and energy that you put into the organization. Most members help to staff the booth

Lisa Garnett, Scott Larson, Jeff Jones, Michael DeAngelo,
Marge Pearson, Bob Pietilla, Christine Viene, Alisa Shorey
(for serving on the board in the past two years)

Jeff Jones — Bob Stump Award recipient for 2016

Becky Sundstrom — Bob Stump Award recipient for 2015

Nicole Hickman — newsletter

Tom Hickman — helper in many ways

Andy Matelich and Alisa Shorey — long-time organizers for staffing our fair booths

Bob Bennett — Honey Show organizer

Kris Urv-Wong — journeyman facilitator

Jim Martinson — class leader for classes held at several local businesses

Lauren Wright — library

Becky Sundstrom — web designer

Alicia Halbert — supporting study grant students with generous equipment donations

Jim McCaig, Alan Albanese, Cathy Carruthers and her helpers, and those of you who
helped plant the gardens.

Bill Archer — mower of grass and weeds at our apiary

John Thomas — Honey House organizer

Hannah Carter — monthly refreshments and helper

Theresa Knutsen — educational programs

Kelly Stave — forage gardens and help with The Native Plant Society grant

All of you who donated auction items.

Funds raised help to support our educational programs.

If I have a missed your name, please forgive me.

Many people come forward to help, and your work is greatly appreciated.

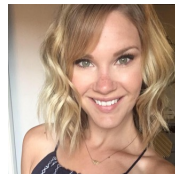
Organizational highlights — established insurance for the organization
and our board volunteers, continue to have a strong budget
that supports our programs and costs.

***Here's to a great 2017, and the energy and enthusiasm
we are sure to see with our new Board!***



Thank you for the opportunity to serve on the PCBA Board as your Vice-President. I am looking forward to working with the new 2017 board on a variety of programs that are in place for PCBA members and looking for ways that we can serve you better as you make increase in your own apiary and beekeeping experience. If you have ideas on how we can better serve you, or if you just have a question on something going on in your apiary, please feel free to contact me through the PCBA email and I will get back to you promptly.

Thanks, JT



I am new to this bee keeping thing and excited to learn more as I grow in the association and as secretary. I am a graduate of Mercyhurst University with a BA in Psychology and a BS in Exercise Science. I am a Health and Fitness Specialist for the Boeing company, helping to encourage healthy lifestyle while teaching injury prevention classes. In my experiences personally and professionally I have a great interest in learning and educating people. I enjoy communications and have held roles within my job duties at The Boeing Company to communicate information to a broad population, while keeping it fun and engaging!

My husband, Matthew, and I are transplants from all over the United States (military families). We have three dogs, Juno, Oly and Lego. They are our "children" and we do everything we can with them in tow. We enjoy gardening, hiking, shooting, fishing, camping, exploring cities and finding new breweries together. Oh, and of course the most important, we enjoy learning about the bees together.

I look forward to serving as Secretary for the Board and getting to know each of you.

Thank you, Briana

Marge Pearson
Events

Come join us for our Annual Christmas Party on December 5th at 6pm.

There will be no class or general meeting but the

and Ham are provided. Please bring a yummy side dish.

Mason Bees

Are you interested in having Mason Bees or learning more about them? Do you need any supplies? Ed Crockett has a few years experience with them and is selling some items.

Please give Ed a call at 206-579-6484 for more information.



Bee / Pollinators Kid Classes for ages 7-12

(offered to children of PCBA members)

Starting January 2017, during beginning beekeeping classes.

Fun hands on activities. Kids will learn about our pollinators and their habitats.

They will also get to create a garden habitat. Please sign up your kids soon, as space is limited. See Theresa Knutsen for more information.

Minutes

Minutes from the General Meetings and the Board Meetings can be found [here](#).

Upcoming Events

December 5th

6:00pm Christmas Party

January 2nd

6:15pm Beginning Beekeeping Class

6:15pm Journeyman Study Group

7:30pm General Meeting

February 6th

6:15pm Beginning Beekeeping Class

6:15pm Journeyman Study Group

7:30pm General Meeting



BEE CARDS
HANDMADE

For Inquiries,
Email or Call Diane Rasch
htcreativity@yahoo.com
(815) 621-1788

\$3.50 each and
quantity discounts

Be sure to like us on Facebook.

Schaffer's Honey Bee Farms
~Pure Natural Raw Honey~



Charles E. Schaffer
Owner

28610 186th PL SE
Kent, WA 98042-5403

Phone: 253-315-5084
winterwood.gold@comcast.net
www.ceshoneybees.com

Package Bees
Nucs
Woodenware
Custom Extracting



Interested in
Mason Bee's?
Need supplies?
Give a me a buzz.

Mason Bee's and Supplies
Ed Crockett 206-579-6484



5100 - 180th Way SW
Rochester, WA 98579

757.376.2821
Facebook: Hive5Bees
www.Hive5Bees.com | kevinmills2004@yahoo.com

Dr. D's Bees

All Natural
No Additives
No Preservatives

(360) 825-5117

Simply The Best Honey
Beeeeeecause It's Local!

MILLER COMPOUND
HoneyBees & Agriculture LLC

Lauri Miller
253-843-1319
jloutdoors@aol.com

VSH
Carniolan
Hybrids

Washington Bred &
Raised Queens & Bees
~Consulting services~ Follow us on Facebook

Lincoln Mettler
MOUNTAIN RAIN
BEE PRODUCTS

Locally raised nucs and queens

12305 28th St. Ct. E. Edgewood, WA 98372
Phone: 253-826-3103 Cell: 253-330-4689
Email: mettlerfamily@comcast.net

Sunny Bee Honey Farm
beekeeping supplies



Alicia Halbert
38619 - 180th Ave. SE
Auburn, WA 98092
(253) 951-2687
sunnybee@skynetbb.com

Harvard L. Robbins
Robbins Honey Farm

Beekeeping Supplies, Bees, Honey

253-588-7033 7910 - 148th ST SW
253-370-0842 Lakewood, WA

email: robbinslh@aol.com

Old Sol Apiaries

Your source for Oregon bred queens and nucs. Selected for productivity, disease & mite tolerance, and hygienic behavior. Double vetted queens assure higher acceptance rates and longevity. Survivor stock and WSU Caucasian genetics available from May through August. Old Sol is a "Bee Informed" Partner using science to advance honeybee breeding and care.

541 -582-2337 www.oldsolbees.com

Subscribe

Share ▾

Past Issues

Place your ad in

Translate ▾



Website



Facebook



Email



Forums

Copyright © 2016 Pierce County Beekeepers Association, All rights reserved.

[unsubscribe from this list](#) [update subscription preferences](#)

The MailChimp logo, which consists of the word "MailChimp" in a white, cursive script font, centered within a gray rounded rectangular box.